



Complete Security



Reliable high availability
of the entire IT infrastructure

▶ Computer Multi Control: Individual, flexible security

The defined availability of IT systems is a critical factor for most companies. The security of your IT infrastructure begins with a single rack. The Computer Multi Control Top-Concept (CMC-TC) from Rittal RimatriX5 is a complete security management concept for preventive protection to guard against consequential costs, and the central organisational unit for linking to facility management.

▶ Broad diversity of interfaces:

- 10/100BaseT full-duplex
- RS232 – ISDN
- GSM
- Protocols: TCP/IP, SNMP V1.0, FTP, HTTPS, NTP, SSH, PPP

▶ Freely selectable power supply:

- 24 V DC
- 48 V DC
- 90 – 230 V AC
- Single or redundant

▶ Reliable self-monitoring:

- Permanent monitoring of sensors and modules for proper functioning
- Immediate notification of any interruption to the cable connection

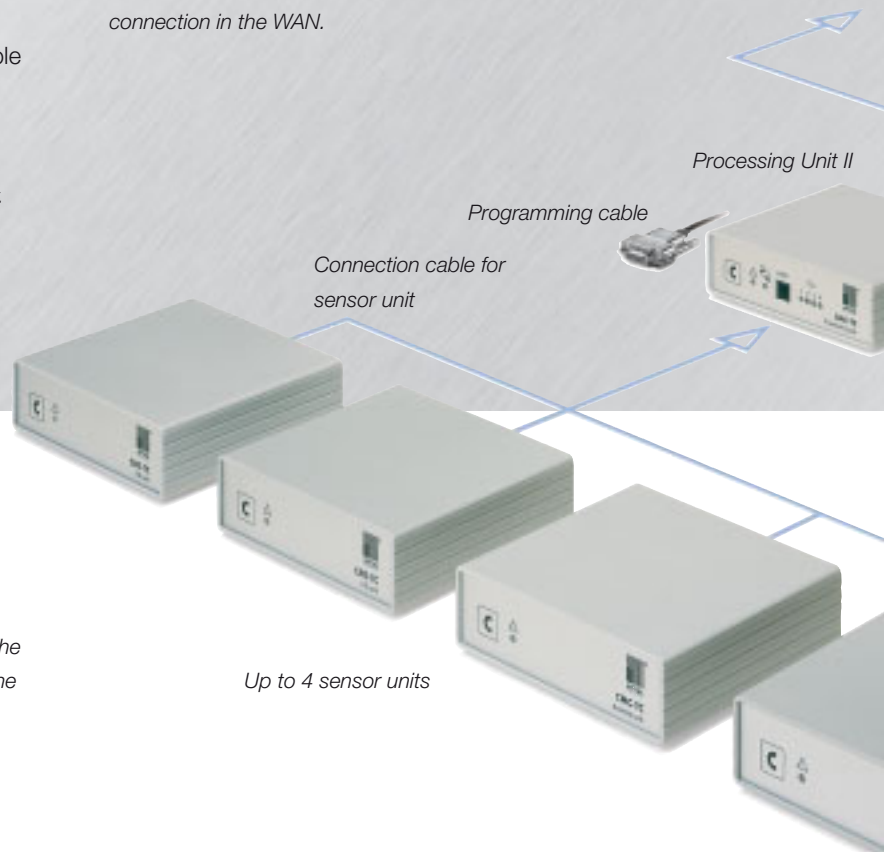
In focus: Lower operating costs

Automation is vital for managing complex IT systems efficiently. The CMC-TC offers this option.

Communicative at many levels: RiWatchIT



The system uses the existing infrastructure to forward important safety-relevant information: via the LAN network, as an SNMP trap/e-mail, as an SMS via GSM/ISDN, or with a point-to-point connection in the WAN.



The Processing Unit II (PU II) forms the basis of any CMC-TC application and provides a direct interface to the user network. The sensor units are linked to the PU II with various sensors. The function of the CMC-TC monitoring system is determined by the selection of sensor units and sensors.

With RimatriX5, Rittal offers its customers an integrated, complete solution for high IT performance with a comprehensive range of services and perfectly coordinated IT modules: Rack, power, cooling, security, plus monitoring & remote management.

Modular flexibility

A wide range of modules allows free selection of the monitoring functions. The modular layout and almost limitless extensibility allow the CMC-TC to grow along with your requirements.



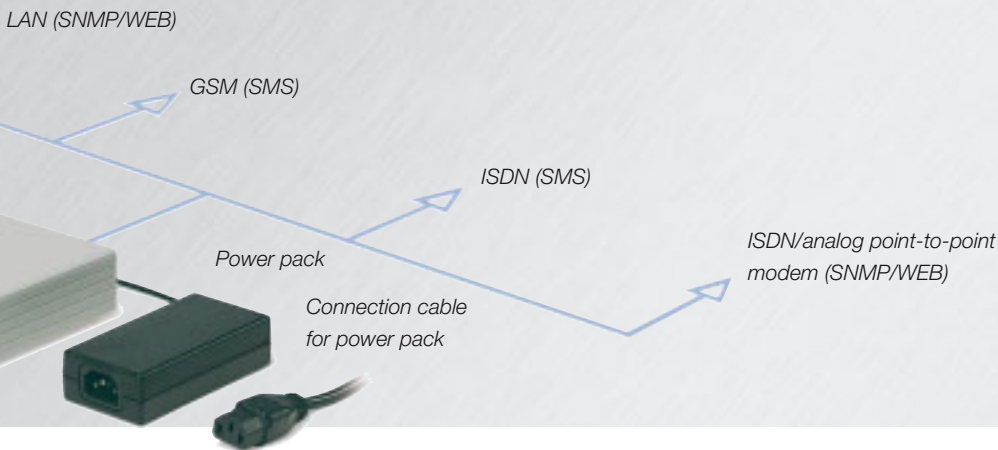
Everything the operator of climate control components needs to know – from control to administration.



Monitoring of access control ensures regulated access to the rack.



Comprehensive monitoring and control – from the active PSM to intelligent sub-distribution of electricity.



Simple installation based on the plug & play system

The sensors and sensor modules are connected via plug & play using RJ12 patch cables. The sensors are detected automatically.

► Security modules in RimatriX5

Security

Protection against data misuse is one of the most vital security factors in any company. The CMC-TC system regulates access to the server enclosures and documents access by individuals.



Access



Vandalism



Magnetic card



Numerical code



Transponder



Smart card



Biometric



Legic



Security handle



Access systems



Motion sensor



Cooling

Any deviation from the setting is logged. The CMC-TC monitors the climate control components.



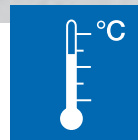
Cooling units



FCS fan systems with speed monitoring



LCP air/water heat exchangers



Temperature control



Airflow monitoring



Speed control



Leakage monitoring



Monitoring of icing



Monitoring of filter mat

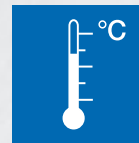
Rittal Rimatrix5 contains the modules rack, power, cooling and security, which are monitored via the remote management system. The physical environment of the Rimatrix5 data centre may be controlled via the CMC-TC system.

Rack

CMC-TC logs all safety-relevant parameters in and on IT racks using sensors.



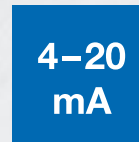
Humidity monitoring



Temperature monitoring



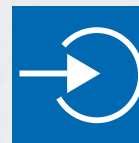
Monitoring of humidity



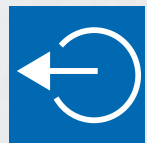
Individual, analog input



Smoke monitoring



Individual, open, digital input



Individual relay output



Temperature sensor

Power

The CMC-TC monitors voltages and currents, and controls the power supply for individual network components.



Rittal Power Control Unit (PCU)



3-phase voltage monitoring



Power System Module (PSM)



Power supply



Power control



Overvoltage protection



Voltage measurement



Current measurement

► Perfection in security

The RimatriX5 concept from Rittal may be flexibly configured. The security levels may be individually upgraded to the user's precise requirements – be it video monitoring, fire extinguisher systems, Display Unit II or the network management system CMC-TC.



Premium Dome video network camera

Security is becoming ever more crucial in the IT infrastructure, and this includes video monitoring systems. The Premium Dome network camera, with two individually directable cameras, facilitates monitoring between bayed enclosure suites.

Display Unit II – Information in situ

The new graphical Display Unit II may be linked directly to the PU II. CMC alarms, status messages, temperatures, voltages, currents etc. may be displayed on the screen, depending on the monitoring application. Additionally, the TCP/IP network settings of the PU II may be made using the three keys.



Display Unit II

► Central representation of alarms on the Display Unit II:

- Temperature
- Voltage
- Smoke
- Access
- Cooling units
- LCP (Liquid Cooling Package)



Extinguisher systems with smoke extraction – Play it safe

The Rittal rack extinguisher system Detection-Active (DET-AC) may be mounted directly in the 482.6 mm (19”) mounting level of the rack. Early smoke detection, optimum smoke analysis, automatic system deactivation and fire extinguishing are among the impressive features of this system.



Extinguisher systems with smoke extraction

► Benefits at a glance:

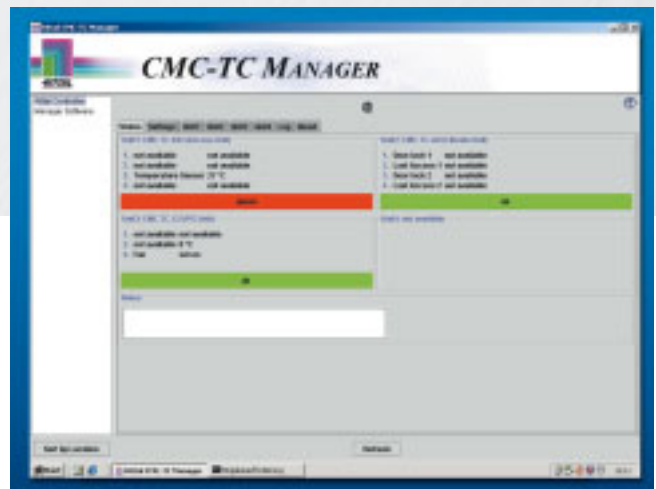
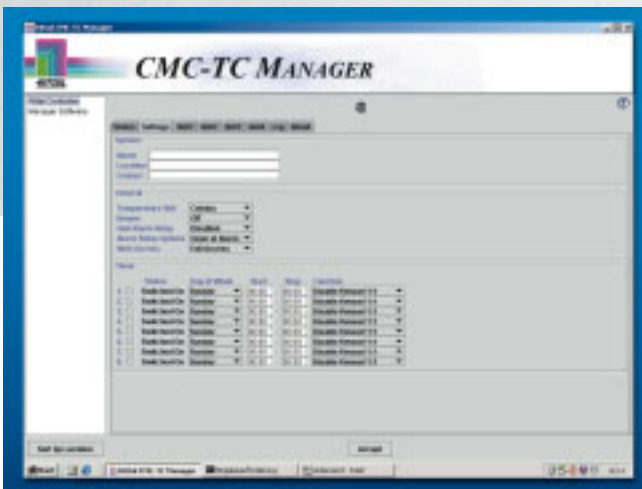
- Operation of the technical installation is ensured
- Detection at the earliest possible moment, due to built-in smoke extraction system
- Valuable electronics are not damaged by the extinguishing process
- Problem-free upgrades with built-in and add-on variants
- Provides reliable protection for individual enclosures and enclosure combinations
- Choice of options for extinguisher gases: FM200 or nitrogen
- Battery buffer

CMC-TC network management system – Comprehensive monitoring

The CMC-TC manager is the central signalling point for CMC-TC alarms. All processing units integrated into the network automatically transmit alarms, which are listed and archived. The software may be downloaded free of charge from the Internet (www.cmc-tc.com).

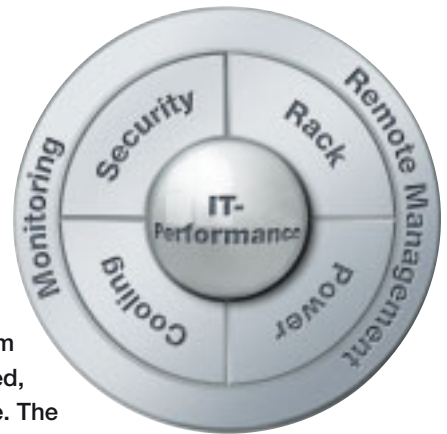
► Benefits at a glance:

- Alarm forwarding via e-mail
- Graphical representation of temperature variation
- Alarm overview
- Log data function
- Easy operation



CMC-TC Manager – the network management system

▶ RimatriX5 – Complete solutions for a reliable IT infrastructure



To a large extent, the performance of the IT infrastructure is reliant upon optimum interaction between individual components. Rittal RimatriX5 is the rack-optimised, holistic, scalable, super-efficient system solution for outstanding IT performance. The strategy behind the RimatriX5 concept is based on five optimum stand-alone solutions, an integral security package, plus a comprehensive range of services.

RIMATRIX5
Permanent Power

Modular power for maximum efficiency

Modular energy back-up and distribution in the IT and data centre for a constant, consistent energy supply.

RimatriX5 Permanent Power

RIMATRIX5
Modular Services

Comprehensive services for maximum operational reliability and efficiency

A comprehensive range of services for optimum operational reliability and availability coupled with a high level of efficiency.

RimatriX5 Modular Services

RIMATRIX5
Monitoring & Remote Management

Perfect transparency and security in the data centre

Holistic escalation management for the entire physical network infrastructure.

RimatriX5 Monitoring & Remote Management

RIMATRIX5
Perfect Cooling

A perfect climate for high performance servers

Custom-configured climate control concepts for high-performance cooling.

RimatriX5 Perfect Cooling

Simply tick the relevant boxes to request your copies:

Fax hotline 01709 701217

www.rimatrix5.co.uk

Surname, first name

Tel./fax

Company

E-mail

Department

Address

Date, signature

Rittal Limited Braithwell Way • Hellaby Industrial Estate • Hellaby • Rotherham • S Yorks S66 8QY
Tel.: (01709) 704000 • Fax: (01709) 701217 • www.rittal.co.uk • eMail: information@rittal.co.uk



Switch to perfection **RITTAL**