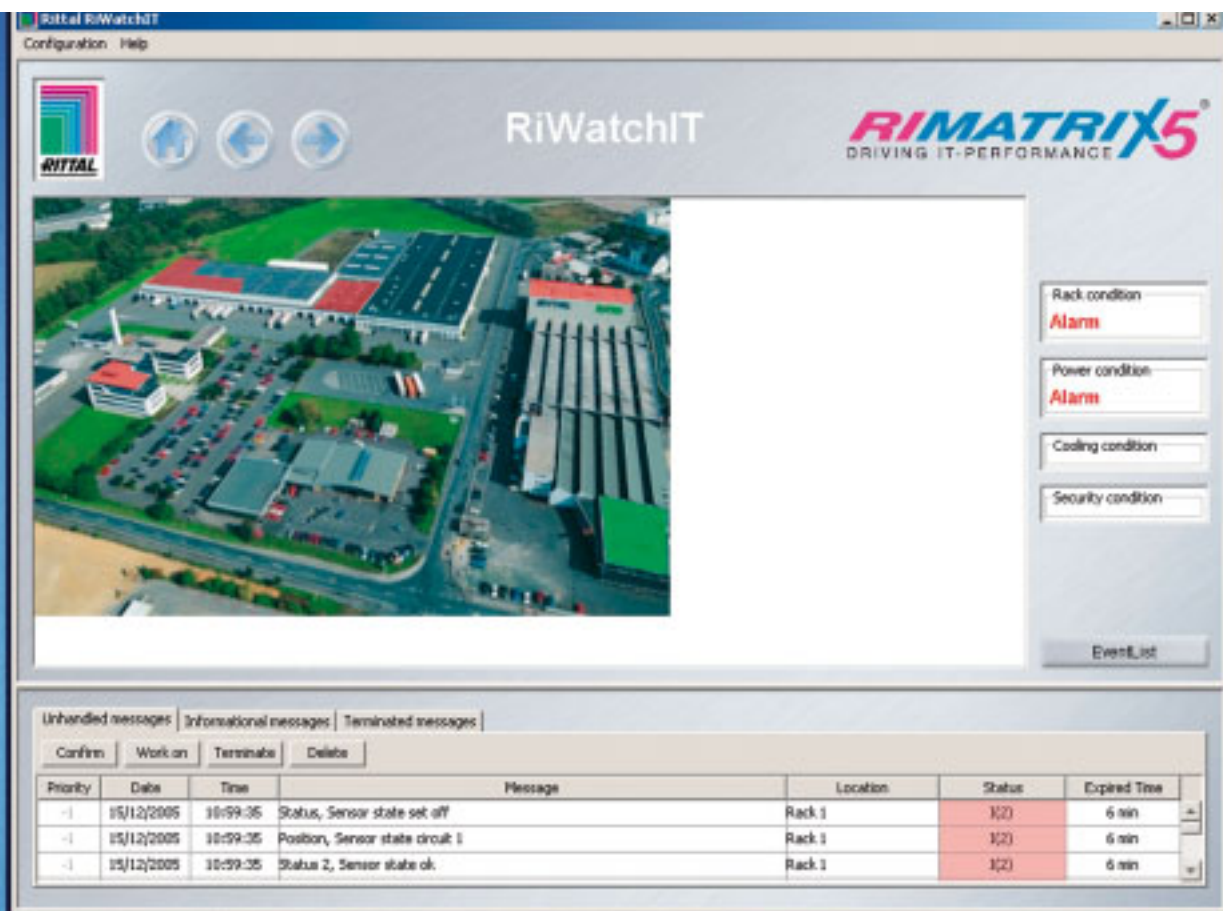




## Monitoring & Remote Management



Perfect transparency and security  
in the data centre

# ► Holistic solutions for security and remote maintenance

## RiGetIT and RiWatchIT – A powerful partnership

RimatriX5, with its unique combination of remote management software and configuration software, provides the correct remote management concept to suit every individual network infrastructure.

### RiGetIT – Complete configuration of the physical infrastructure

This configuration software from Rittal is an efficient planning tool for a modern IT infrastructure. A wizard guides users automatically and logically through a catalogue of questions to the correct RimatriX5 components. The result is a professionally planned IT infrastructure which may be output in the form of an IT room plan (graphical representation). Combined with detailed parts lists, this provides an excellent source of information on which to base individual quotes. The IT room plan (graphical representation) and the generated parts lists may be processed in the remote management software RiWatchIT, which means that a central management system is directly available for the RimatriX5 IT system.

### ► Planning of IT infrastructures:

- Design of climate control, UPS systems, power distribution and security systems
- IT rack configurator with plausibility checks
- Technical information and data sheets for the products
- Product catalogue
- Parts list for different projects
- Interface to the remote management software RiWatchIT



## RiWatchIT – Effective monitoring & remote management

RiWatchIT, the monitoring software for RimatriX5, operates in conjunction with RiGetIT. RiGetIT supplies a graphical representation of the IT room with monitoring function data integrated into the individual rack/UPS/power/cooling systems. The RiWatchIT software uses this information to generate a graphical representation of the room with allocated alarm messages as the basis for monitoring visualisation. Any malfunctions are displayed automatically. RiWatchIT is a network management system tailored to RimatriX5. Data exchange occurs in the Ethernet via SNMP.

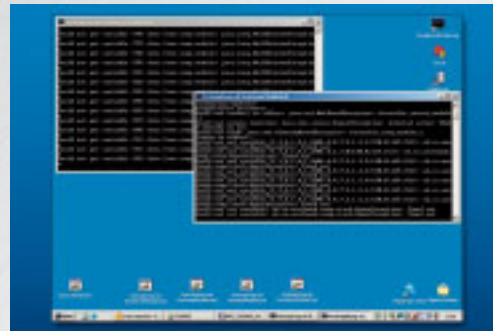
### ▶ Monitoring of the data centre:

- Trap alarm message system
- Storage of the alarms in a log file
- In the event of an alarm, e-mail notification is sent via Simple Mail Transfer Protocol SMTP
- Monitoring and display of the status of RimatriX5 components
- Setting of monitoring levels and limits
- Graphical representation of temperature variation
- Auto-discovery function for simple set-up of the system
- Open to operating systems, thanks to Java (Windows/Linux)
- System alarms may be processed, annotated and archived

## Extended options with RiWatchIT modules

### Server module/SNMP module

The server module and SNMP module may be installed on any given computer as a service. All key data relating to the security of the data centres is collated and documented. The applications run permanently in the background.



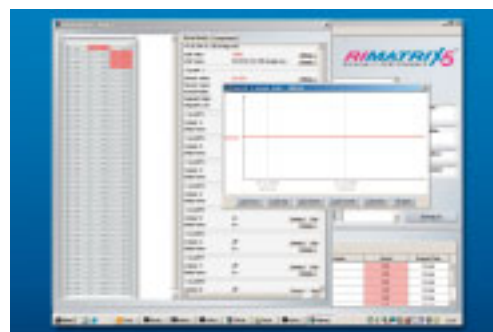
### Admin module

The Admin module allows individual structuring of the alarm system. The various alarms may be linked to the different locations.



### Run View module

The Run View module may be launched from up to ten computers in parallel. Monitoring of the data centre may be implemented from here. The View module receives the information via the server/SNMP module.



*RiWatchIT allows you to monitor the on-going operation of a data centre.*

## ► Space-saving server administration and perfect KVM technology

### Rittal monitor/keyboard unit – Compact administration

The compact 1 U monitor/keyboard unit from Rittal ensures reliable, space-saving, on-site server administration. The 1 U console is easily combined with the Rittal KVM switch series SSC view, allowing access to 8 or 32 servers respectively. Despite the small size, this compact solution has a 482.6 mm (19") keyboard complete with number pad and touchpad.



### Rittal KVM technology – Triple perfection

#### SSC view – Full control in 1 U

The SSC view line, with the Rittal monitor/keyboard unit, forms a compact console/switching solution which only occupies 1 U in the rack. The Rittal solution may be combined as required between a choice of two different console types with 15" and 17" TFT display with country-specific keyboard layouts and two different KVM switches. It is easily upgraded at a later date, or exchanged for a more powerful system.

#### SSC compact – The new compact class

The new SSC compact offers top performance in a small space at an inexpensive price. The integral long-range power pack makes it ideally suited for stand-alone operation or as an upgrade to an existing installation. With the SSC compact 8, standard VGA cables locked to the PS/2 sockets ensure reliable operation.

With the SSC compact 32 Cat, connection to the computer is made using Cat5 cables and an SSC converter.

#### SSC premium – Modular and future-proof

The modular SSC premium is the first choice for medium-sized to large installations or in cases where modern features such as multi-user and/or IP access (KVM-over-IP) are required. Almost all system requirements may be met with just a few system components. The modularity ensures that this KVM solution is future-safe, as the SSC premium system is easily expanded to keep pace with your server installation as it grows.

- Three different console types
- Three KVM matrices (for two, four or eight users)
- Three converter types for connecting a wide range of different server platforms



*SSC view facilitates a compact console/switching solution on just 1 U.*



*SSC compact is equally suited for stand-alone operation and as a retrospective upgrade.*



*SSC premium adapts effortlessly and flexibly in line with future requirements.*

## ► KVM switches SSC premium – Optimum connection guaranteed

### SSC premium – Systematic flexibility

#### 1 SSC premium (switching matrix)

The servers and user consoles (two, four or eight users) are connected to the “heart” of the KVM matrix. Cascading several SSC premiums (including a mixture) increases the number of servers that may be connected (up to a maximum of 2048). A redundant power pack (option) serves as an additional fail-safe.

#### 2 SSC console (local, Cat5)

The SSC console connects the user workstation to the SSC matrix. The keyboard, mouse and monitor are all connected to it. Connection to the SSC premium is made using Cat5 cables.

#### 3 SSC console IP

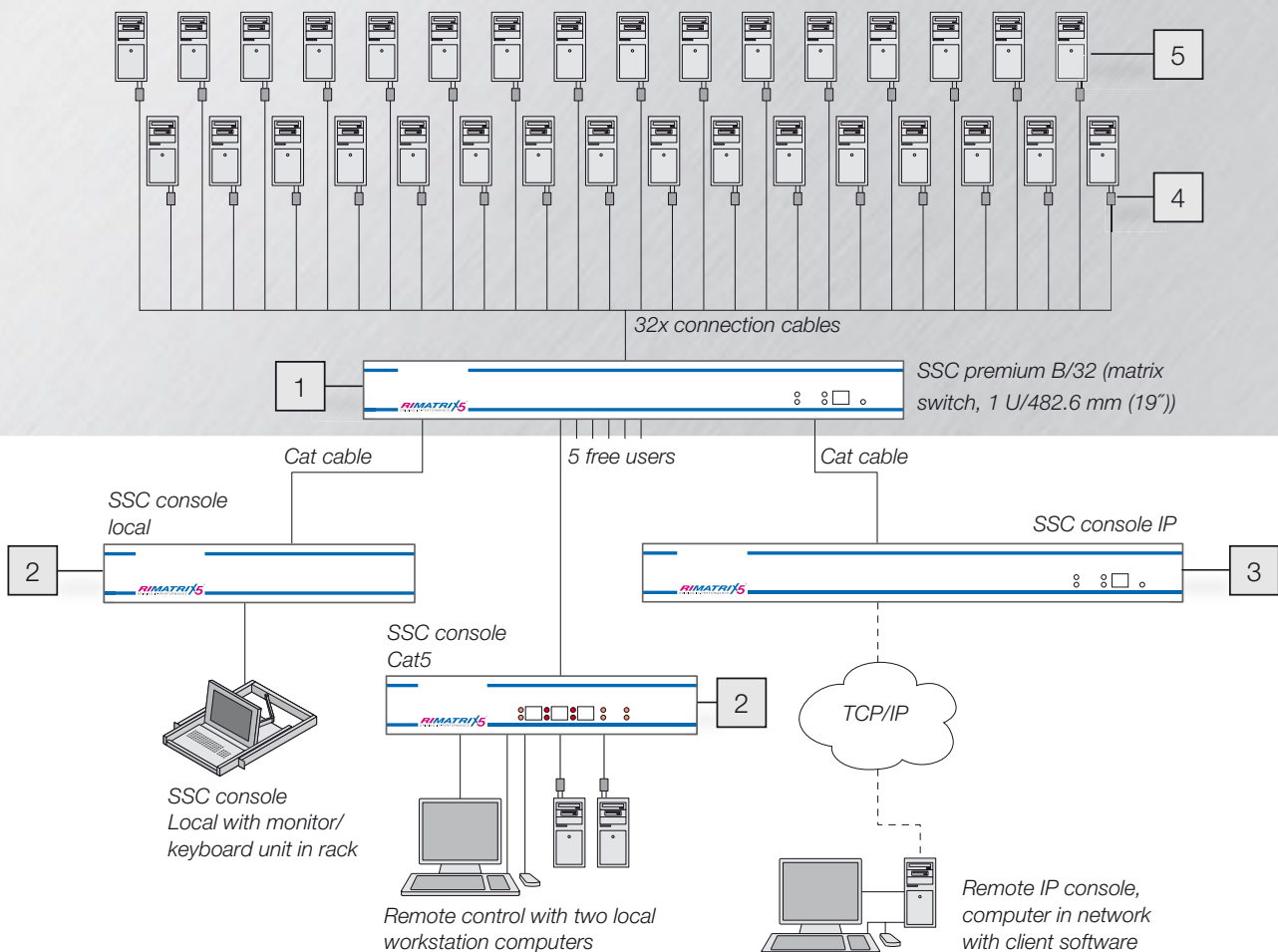
The SSC console IP extends the SSC premium to include a valuable KVM-over-IP solution. **In this way, the entire system may be administered from anywhere in the world, using any available IP network.**

#### 4 SSC converter

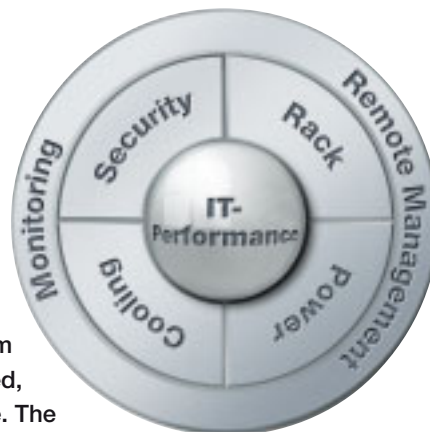
The SSC converter is used to connect the servers to the KVM matrix using a Cat5 cable. Different SSC converters are available for the various hardware platforms.

#### 5 SSC Power Control

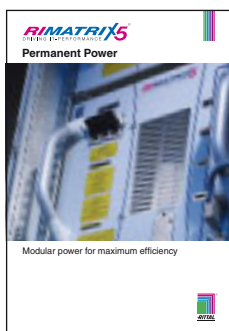
This adaptor allows every server to be connected or disconnected. Hard reboots are also possible. The power function is selected and controlled using the OSD menu of the SSC premium. A special Rittal socket strip is used (PCU & active 8-way PSM with switch function).



# ▶ RimatriX5 – Complete solutions for a reliable IT infrastructure



To a large extent, the performance of the IT infrastructure is reliant upon optimum interaction between individual components. Rittal RimatriX5 is the rack-optimised, holistic, scalable, super-efficient system solution for outstanding IT performance. The strategy behind the RimatriX5 concept is based on five optimum stand-alone solutions, an integral security package, plus a comprehensive range of services.



Modular energy back-up and distribution in the IT and data centre for a constant, consistent energy supply.

RimatriX5 Permanent Power



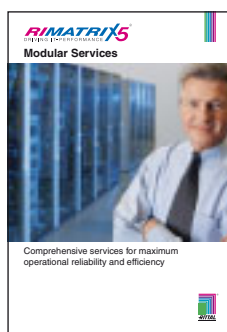
Physical rack and room protection are pivotal to ensuring high availability of the entire infrastructure.

RimatriX5 Complete Security



Custom-configured climate control concepts for high-performance cooling.

RimatriX5 Perfect Cooling



A comprehensive range of services for optimum operational reliability and availability coupled with a high level of efficiency.

RimatriX5 Modular Services

Simply tick the relevant boxes to request your copies:

**Fax hotline 01709 701217**

**www.rimatrix5.co.uk**

\_\_\_\_\_  
Surname, first name

\_\_\_\_\_  
Tel./fax

\_\_\_\_\_  
Company

\_\_\_\_\_  
E-mail

\_\_\_\_\_  
Department

\_\_\_\_\_  
Address

\_\_\_\_\_  
Date, signature

Rittal Limited Braithwell Way • Hellaby Industrial Estate • Hellaby • Rotherham • S Yorks S66 8QY  
Tel.: (01709) 704000 • Fax: (01709) 701217 • www.rittal.co.uk • eMail: information@rittal.co.uk



Switch to perfection **RITTAL**